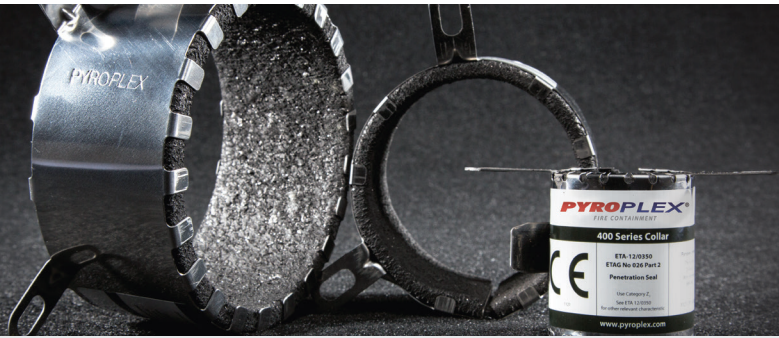


Application:	Service penetrations - plastic SWD systems
Fire resistance period:	up to 240 minutes (dependant on application)
Insulation/integrity:	Insulation and integrity
Test standard:	BS 476: Part 20: 1987 and BS EN 1366-3: 2009
Approval type:	Certifire CF635 / CE Mark 1121-CPR-JA5002

**CE Marked  
400 Series  
Pipe Collar**



TYPICAL  
INSTALLATION  
- wall application



Pyroplex<sup>®</sup> CE Marked 400 Series Pipe Collar has been specifically designed to re-instate the fire resistance of a wall or floor which has been penetrated by plastic flammable pipes used in soil, waste and drainage services. They will seal closed flammable pipes from 25mm to 400mm diameter and can be face fixed to a wall or ceiling structure. They are suitable for use on concrete, masonry and plasterboard partitions. Pyroplex<sup>®</sup> CE Marked 400 Series Pipe Collar is tested to BS 476: Part 20: 1987 and BS EN 1366-3: 2009, European classification in accordance with BS EN 13501-2: 2007 +A1: 2009. Pyroplex<sup>®</sup> 400 Series Pipe Collars are compliant with the requirements given in CERTIFIRE TS03.

**CERTIFIRE Certificate No. CF635.**  
**EC Certificate of conformity 1121 - CPR - JA5002.**

**FIELD OF APPLICATION**

Pyroplex<sup>®</sup> CE Marked 400 Series Pipe Collar has been specifically designed to prevent the passage of fire and hot gases through:

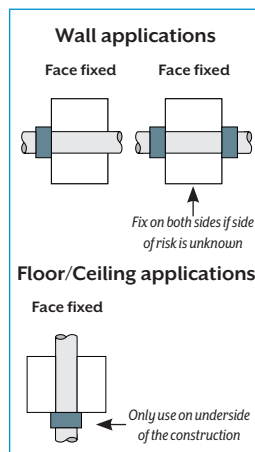
- Concrete and masonry constructions -  
*Suitable for plasterboard partitions PPC25 - PPC160 only*
- Soil, waste and drainage 'above ground' applications

**PRODUCT FEATURES**

- Pyroplex<sup>®</sup> CE Marked 400 Series Pipe Collars have achieved a fire resistance of up to 240 minutes
- 400 series collar has a stainless steel outer casing
- Tab closing device means collars are easy to fix in place around pipe and rotate or slide into position
- Intumescent material is totally unaffected by water, is robust, 'non-flaking' and difficult to tear

**INSTALLATION INSTRUCTIONS**

1. Ensure substrate around pipe is flat and free from obstructions – if necessary make good by using Pyroplex<sup>®</sup> Intumescent Acrylic Sealant around the perimeter.
2. Release retaining pin and position pipe collar around pipe.
3. Slide tab through slot in pipe collar and fold back 180° to secure.
4. Secure pipe collar by drilling holes in structure by using fixing lugs as template. To fix use M8 x 65mm sleeve anchors or 50mm [minimum] expanding bolts.



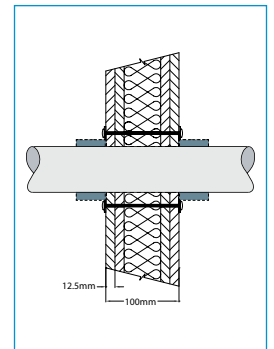
**Do not use plastic raw plugs and or plastic sleeve anchors.**

5. When the collar has been securely fitted into place any residual gaps between the collar and the substrate can be filled using Pyroplex<sup>®</sup> Intumescent Acrylic Sealant.

**INSTALLATION INSTRUCTIONS**

**Flexible Partition Walls**

1. Ensure substrate around pipe is flat and free from obstructions – if necessary make good by using Pyroplex<sup>®</sup> Intumescent Acrylic Sealant around the perimeter.
2. Release retaining pin and position pipe collar around pipe.
3. Slide tab through slot in pipe collar and fold back 180° to secure.
4. Secure pipe collar by drilling holes in structure and using fixing lugs as template. To fix use M8 continuous all thread bar and secure either side with appropriate size nut.
5. When the collar has been securely fitted into place any residual gaps between the collar and the substrate can be filled using Pyroplex<sup>®</sup> Intumescent Acrylic Sealant.



## PRODUCT RANGE

### 400 Series Pipe Collars CE Marked - *Range for concrete and masonry walls and floors*

Part no.	Pipe Materials	Pipe Ø [mm]	Pipe wall thickness [mm]	Collar depth [mm]	No. of fixing lugs	Orientation and construction	
						Wall	Floor
PPC25-4	PVC-u	25	1.8	60	2	EI 180	EI 180
PPC32-4	PVC-u	32	1.8	60	2	EI 180	EI 180
PPC40-4	PVC-u	40	1.8	60	2	EI 180	EI 180
PPC48-4	PVC-u	48	3.2	60	2	EI 180	EI 180
PPC55-4	PVC-u	55	3.2	60	3	EI 180	EI 180
PPC68-4	PVC-u	68	3.2	60	3	EI 180	EI 180
PPC82-4	PVC-u	82	3.2	60	3	EI 180	EI 180
PPC90-4	PVC-u	90	3.2	60	4	E 180 & EI 180	E 180 & EI 180
PPC110-4	PVC-u	110	3.2	60	4	EI 180	EI 180
PPC125-4	PVC-u	125	3.2	60	4	EI 180	EI 180
PPC135-4	PVC-u	135	3.2	60	4	EI 180	EI 180
PPC160-4	PVC-u	160	3.2	60	6	EI 180	EI 180
PPC200-4	PVC-u	200	5.4	180	8	EI 240	EI 180
PPC225-4	PVC-u	225	7.2	180	8	EI 240	EI 180
PPC250-4	PVC-u	250	7.2	180	9	EI 240	EI 180
PPC315-4	PVC-u	315	8.2	180	11	EI 180	EI 120
PPC350-4	PVC-u	350	9.8	180	12	EI 120	EI 180*
PPC400-4	PVC-u	400	9.8	180	13	EI 120	EI 180*

\*PPC350 and PPC400 achieve EI 180 only, when installed on both sides of the separating element (i.e floor)

### 400 Series Pipe Collars CE Marked - *Range for plasterboard partitioning walls*

Part no.	Pipe Materials	Pipe Ø [mm]	Range of Pipe wall thickness [mm]	Collar depth [mm]	No. of fixing lugs	Orientation and construction
						Plasterboard Wall
PPC25-4	PVC-u	25	1.9 - 3.0	60	2	EI 120
PPC25-4	PE	25	2.4 - 3.7	60	2	EI 120
PPC25-4	PP	25	1.8 - 3.7	60	2	EI 90 & E 120
PPC32-4	PVC-u	32	1.9 - 3.0	60	2	EI 120
PPC32-4	PE	32	2.4 - 3.7	60	2	EI 120
PPC32-4	PP	32	1.8 - 3.7	60	2	EI 90 & E 120
PPC40-4	PVC-u	40	1.9 - 3.0	60	2	EI 120
PPC40-4	PE	40	2.4 - 3.7	60	2	EI 120
PPC40-4	PP	40	1.8 - 3.7	60	2	EI 90 & E 120
PPC48-4	PVC-u	48	2.2 - 3.4	60	2	EI 120
PPC48-4	PE	48	2.5 - 4.0	60	2	EI 120
PPC48-4	PP	48	1.9 - 4.4	60	2	EI 90 & E 120
PPC55-4	PVC-u	55	3.3 - 5.2	60	3	EI 120
PPC55-4	PE	55	3.3 - 5.2	60	3	EI 120
PPC55-4	PP	55	2.3 - 7.5	60	3	EI 90 & E 120
PPC68-4	PVC-u	68	3.3 - 5.2	60	3	EI 120
PPC68-4	PE	68	3.0 - 5.4	60	3	EI 120
PPC68-4	PP	68	2.3 - 7.5	60	3	EI 90 & E 120
PPC82-4	PVC-u	82	3.3 - 5.2	60	3	EI 120
PPC82-4	PE	82	3.0 - 5.4	60	3	EI 120
PPC82-4	PP	82	2.3 - 7.5	60	3	EI 90 & E 120
PPC90-4	PVC-u	90	4.8 - 7.4	60	4	EI 120
PPC90-4	PE	90	3.4 - 6.6	60	4	EI 120
PPC90-4	PP	90	2.7 - 10.0	60	4	EI 120
PPC110-4	PVC-u	110	4.8 - 7.4	60	4	EI 120
PPC110-4	PE	110	3.4 - 6.6	60	4	EI 120
PPC110-4	PP	110	2.7 - 10.0	60	4	EI 120
PPC125-4	PVC-u	125	4.8 - 7.4	60	4	EI 120
PPC160-4	PVC-u	160	6.2 - 9.5	60	6	EI 120
PPC160-4	PE	160	4.9 - 9.1	60	6	EI 120
PPC160-4	PP	160	4.0 - 9.1	60	6	EI 120

## QUALITY APPROVAL

Pyroplex Limited has a Quality Management System that meets the requirements of ISO 9001, and is independently verified Certificate No. FMI0371.

## OTHER INFORMATION

The information contained herein is based upon the present state of our knowledge. Recipients of our Pyroplex® products must take responsibility for observing existing laws and regulations.

Due to our policy of continuous improvement Pyroplex Limited reserves the right to amend specifications without prior notice.

## TECHNICAL DATA:

### PRODUCT TESTING

Pyroplex Limited have carried out numerous independent fire resistance tests to confirm the suitability of the product and to demonstrate product compliance by utilising BS 476: Part 20: 1987 and BS EN 1366-3: 2009. EN Classification report to BS EN 13501-2: 2007+A1:2009 is available for download on Pyroplex® website.

### MAINTENANCE AND INSTALLATION RECORDS

Since the product is not subject to routine and replacement programmes. Pyroplex Limited recommend that all firestopping materials are checked on a regular basis to ensure that the product remains integral. Replace and fit any damaged components to reinstate the fire resistance of the wall or floor.

### PRODUCT GUARANTEE AND TRACEABILITY

Providing the product is installed in accordance with the requirements of the guidance document the product is guaranteed for a period of 10 years.

### TECHNICAL SUPPORT AND GUIDANCE

Should you require any further information regarding this product please contact Pyroplex Limited or visit our website, [www.pyroplex.com](http://www.pyroplex.com)

## MATERIAL SAFETY DATA:

### COMPOSITION/INFORMATION ON INGREDIENTS

**Chemical nature:** Thermoplastic element composition containing intercalated graphite in a synthetic compound with the addition of fillers and process oils. Presented in a 'steel' outer casing to form the final product.

### POSSIBLE HAZARDS

**Principle hazards:** Not subject to decree of hazardous substances.

**Critical hazard to man and environment:** Not applicable.

### FIRST AID MEASURES

**On skin contact:** Wash thoroughly with soap and water.

**On contact with eyes:** Wash for at least 15 minutes under running water with eyelids held open, consult an eye specialist.

**On ingestion:** Rinse mouth immediately, do not induce vomiting, and seek immediate medical attention.

**If inhaled:** Not applicable in solid state.

### FIRE FIGHTING MEASURES

Pyroplex® intumescent material is self-extinguishing.

**Suitable extinguishing media:** Water, foam, powders and dry extinguishing media.

**Special protective equipment:** Suitable forms of PPE [personal protective equipment]. Avoid inhalation of smoke or fumes.

In the event of fire, contact the appropriate emergency services for assistance.

### ACCIDENTAL RELEASE MEASURES

**Personal precaution:** In the event of fire ensure sufficient ventilation.

**Environmental precaution:** Ensure materials are disposed of in accordance with local authority regulations and/or government legislation.

**Methods for cleaning up:** No special measures necessary.

### HANDLING AND STORAGE

**Handling:** No special requirements.

**Storage:** Store dry and in a cool place [not above +35°C]. Keep out of reach of children. Take care for sufficient ventilation.

### EXPOSURE CONTROLS AND PERSONAL PROTECTION

**Respiratory protection:** None normally required, when supplied in solid form. Drilling creates a dust hazard.

**Hand protection:** None normally required

**Eye protection:** None normally required

**Skin protection:** None normally required

### PHYSICAL AND CHEMICAL PROPERTIES

Form	Solid
Colour	Black
Odour	Acidic
Explosion limits	None

### STABILITY AND REACTIVITY

**Conditions to be avoided:** Thermal decomposition above +300°C.

**Hazardous decomposition products:** Thermal decomposition, fumes contain Hydrogen Chloride. However, the activated graphite is effective at removing aromatic particles from smoke emissions.

### TOXICOLOGICAL INFORMATION

**Acute toxicity:** Not applicable in solid state.

### ECOLOGICAL INFORMATION

**General advice:** Observe the legal provisions regarding the prevention of ground water and surface water as well as air.

### DISPOSAL CONSIDERATIONS

**Product packaging:** Refer to local authority regulations.

**Recommendations:** Disposal of by special means in accordance with local regulations e.g. suitable deposition.

**Contaminated packaging recommendation:** Not applicable.

### TRANSPORT INFORMATION

**Transport hazards:** No regulations apply for the transport of this material. Not classified as hazardous for road, rail, sea or air transport.

### REGULATORY INFORMATION

Labelling according to EEC directives	
National legislation/regulation	Not applicable
VbF classifications	None
Water hazard class	Not applicable